

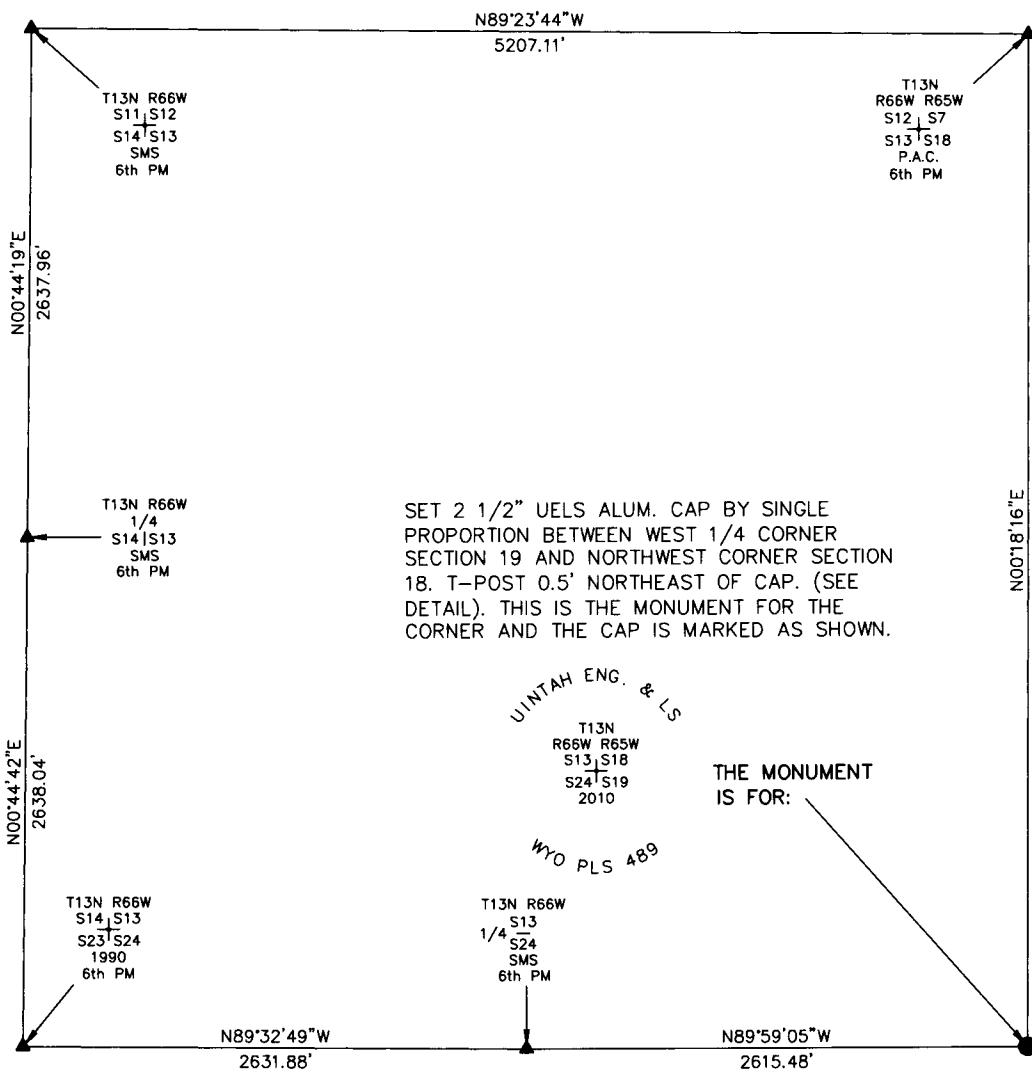
State of Wyoming Corner Record

CORNER PERPETUATION AND FILING ACT,

Regulations of the Board of Registration for Professional Engineers and Land Surveyors.)

Reverse side of this form may be used if more space is needed.

Record of original survey and citation of source of historic information (if corner is lost or obliterated). Description of corner monumentation evidence found and/or monument and accessories established to perpetuate the location of this corner. Sketch of relative location of monument, accessories, and reference points with course and distance to adjacent corner(s) (if determined in this survey). Method and rationale for reestablishment of lost or obliterated corner.



SCALE 1"=1000'
(EXCEPT IN TRIVIAL CASES)
BEARINGS ARE RELATED TO WGS 84 WITH GPS OBSERVATIONS
DRAWN BY: M.D. P.C. L. PENCE
COUNTY: LARAMIE

SET 2 1/2" UELS ALUM. CAP BY SINGLE PROPORTION BETWEEN WEST 1/4 CORNER SECTION 19 AND NORTHWEST CORNER SECTION 18. T-POST 0.5' NORTHEAST OF CAP. (SEE DETAIL). THIS IS THE MONUMENT FOR THE CORNER AND THE CAP IS MARKED AS SHOWN.

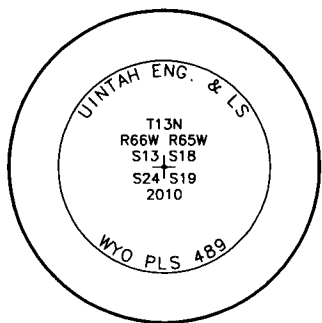
UINTAH ENG. & LS

T13N
R66W R65W
S13 S18
S24 S19
2010

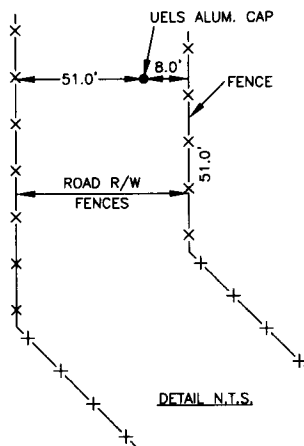
THE MONUMENT IS FOR:

WYO PLS 489

T13N R66W
S13
1/4 S24
SMS
6th PM



THE MONUMENT IS MARKED



Date of Field Work: 06/02/2010 Office Reference: _____

CROSS INDEX DIAGRAM

A	1	2	3	4	5	6	7	8	9	10	11	12	13	14	15	16	17	18	19	20	21	22	23	24	25	A
B																										B
C		6		5				4						3						2						C
D																										D
E																										E
F																										F
G																										G
H																										H
J																										J
K																										K
L																										L
M																										M
N																										N
O																										O
P																										P
Q																										Q
R																										R
S																										S
T																										T
U																										U
V																										V
W																										W
X																										X
Y																										Y
Z																										Z

Firm/Agency, Address

UELS, LLC

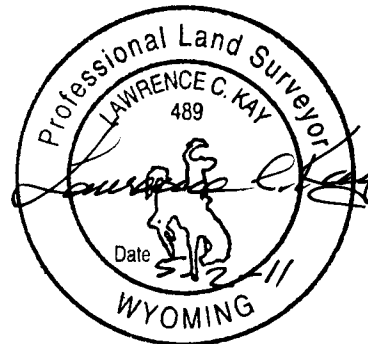
85 South 200 East

Vernal, Utah 84078

Telephone Number: 435-789-1017

This corner record was prepared by me or under my direction and supervision.

SEAL & SIGNATURE



RECORDED 5/06/2011 AT 3:03 PM REC# 568294 JK# 2219 PG# 495
DEBRA K. LATHROP, CLERK OF LARAMIE COUNTY, WY PAGE 1 OF 1